

## NR.1

Musical notation for NR.1, featuring a complex rhythmic pattern with multiple beams and slurs across a staff. The notation includes various note values and rests, with a dynamic marking of *mf* below the staff.

*mf*

## NR.2

Musical notation for NR.2, starting with a tempo marking of  $\text{♩} = 90-100$  and a dynamic marking of *mf*. The notation includes a "slap t." instruction and a triplet of notes.

$\text{♩} = 90-100$   
slap t.

## NR.3

Musical notation for NR.3, starting with a dynamic marking of *mf* and the instruction "Pick a Machina-card". The notation consists of a continuous, dense, wavy line across the staff.

*mf* Pick a Machina-card

## NR.4

Musical notation for NR.4, starting with a tempo marking of  $\text{♩} = 100$  and the instruction "any multiphonic". The notation includes a triplet of notes and a dynamic marking of *f*.

$\text{♩} = 100$  any multiphonic

*mf* *f*

use motif ad. lib, but in time

## NR.5

Musical notation for NR.5, starting with a dynamic marking of *mf* and the instruction "Pick a Machina-card". The notation consists of a continuous, dense, wavy line across the staff.

*mf* Pick a Machina-card

Christian Meaas Svendsen

NR.1 normal

1  
*mf*

sul tasto

NR.2

5 ♩=90-100

*mp*

NR.3

9 tune down to unhearable pitch  
sul ponticello

*mp*

NR.4

♩= 100

13

*mp*

NR.5

16 Pick a Machina-card

*mp*

# Tenor Saxophone Machina Winter Collection 2012

Christian Meaas Svendsen

## NR.1

Musical notation for NR.1, featuring complex rhythmic patterns and accidentals. The notation is written on a single staff with a treble clef and a common time signature. It includes various note values, rests, and accidentals, with some notes grouped by brackets and others marked with slurs and accents.

## NR.2

5 ♩ = 90-100

Musical notation for NR.2, featuring a tempo marking of ♩ = 90-100. The notation is written on a single staff with a treble clef. It includes various note values, rests, and accidentals, with some notes marked with slurs and accents. The notation is marked with 'flutr.' and 'slap t.'.

## NR.3

9 Vary sounds ad.lib, free pulse

Musical notation for NR.3, featuring a tempo marking of ♩ = 90-100. The notation is written on a single staff with a treble clef. It includes various note values, rests, and accidentals, with some notes marked with slurs and accents. The notation is marked with 'flutr.' and 'slap t.'.

## NR.4

♩ = 100

13 Pick a Machina-card

Musical notation for NR.4, featuring a tempo marking of ♩ = 100. The notation is written on a single staff with a treble clef. It includes various note values, rests, and accidentals, with some notes marked with slurs and accents. The notation is marked with 'flutr.' and 'slap t.'.

## NR.5

16 Pick a Machina-card

Musical notation for NR.5, featuring a tempo marking of ♩ = 100. The notation is written on a single staff with a treble clef. It includes various note values, rests, and accidentals, with some notes marked with slurs and accents. The notation is marked with 'flutr.' and 'slap t.'.

# Machina Winter Collection 2012

Trombone

Christian Meaas Svendsen

## NR.1

Musical notation for NR.1: A single staff in bass clef with a common time signature (C). The piece consists of four measures, each containing a half note. The notes are G2, F2, E2, and D2, connected by a long slur. A dashed line below the staff is labeled  $8^{vb}$  and *mp*.

## NR.2

Musical notation for NR.2: A single staff in bass clef with a common time signature (C). The tempo is marked  $\text{♩} = 90-100$ . The piece starts with a 5-measure rest, then a quarter note G2 with a breath mark (V) above it. This is followed by a quarter rest, a quarter note F2 with a breath mark (V) above it, a quarter rest, a quarter note E2 with a breath mark (V) above it, a quarter note D2 with a breath mark (V) above it, and a quarter note C2 with a breath mark (V) above it. The notes E2, D2, and C2 are marked with 'x' and have a wavy line underneath. The piece ends with a double bar line.

## NR.3

9 breathe when necessary, always articulated attack, vary sounds

Musical notation for NR.3: A single staff in bass clef with a common time signature (C). The piece consists of 9 measures, each containing a quarter note. The notes are G2, F2, E2, D2, C2, B1, A1, G1, and F1, connected by a long slur. A wavy line is drawn below the staff. The piece ends with a double bar line. The dynamic marking *p* is at the bottom left.

## NR.4

$\text{♩} = 100$

Musical notation for NR.4: A single staff in bass clef with a common time signature (C). The tempo is marked  $\text{♩} = 100$ . The piece starts with a 13-measure rest, then a quarter note G2 with a breath mark (V) above it. This is followed by a quarter rest, a quarter note F2 with a breath mark (V) above it, a quarter rest, a quarter note E2 with a breath mark (V) above it, a quarter note D2 with a breath mark (V) above it, a quarter note C2 with a breath mark (V) above it, a quarter note B1 with a breath mark (V) above it, a quarter note A1 with a breath mark (V) above it, a quarter note G1 with a breath mark (V) above it, and a quarter note F1 with a breath mark (V) above it. The notes E2, D2, C2, B1, A1, and G1 are marked with 'x' and have a wavy line underneath. The piece ends with a double bar line. The dynamic marking *mf* is at the bottom left.

## NR.5

16 Pick a Machina-card

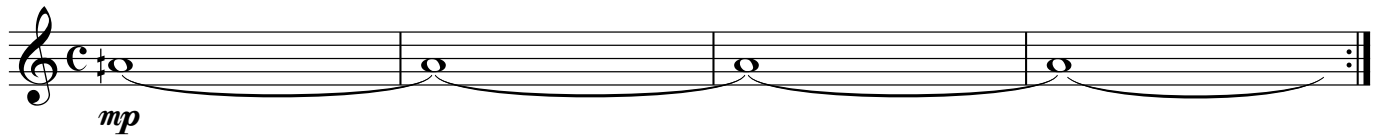
Musical notation for NR.5: A single staff in bass clef with a common time signature (C). The piece consists of 16 measures, each containing a quarter note. The notes are G2, F2, E2, D2, C2, B1, A1, G1, F1, E1, D1, C1, B0, A0, G0, and F0, connected by a long slur. A wavy line is drawn below the staff. The piece ends with a double bar line.

# Machina Winter Collection 2012

Trumpet in B $\flat$

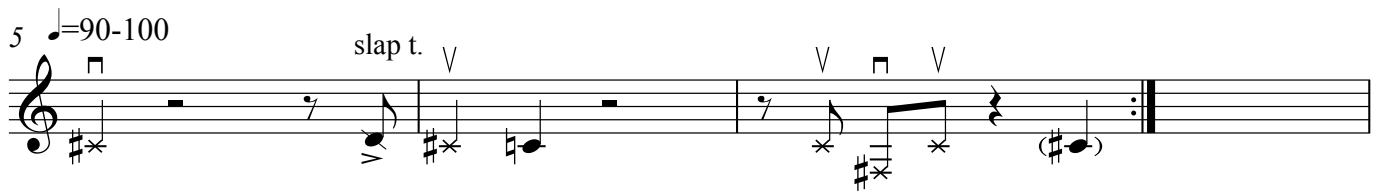
Christian Meaas Svendsen

## NR.1



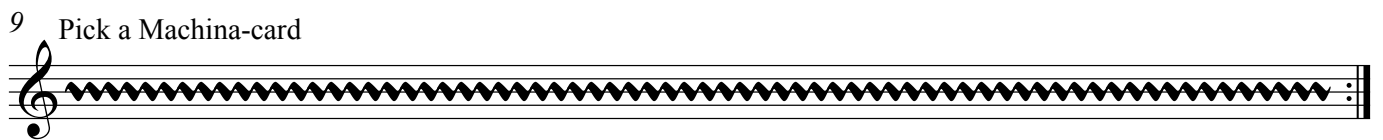
Musical notation for NR.1, starting at measure 1. The piece is in C major and 4/4 time. It consists of four measures of whole notes, each tied to the next. The notes are C4, E4, G4, and A4. The dynamic is *mp*.

## NR.2



Musical notation for NR.2, starting at measure 5. The tempo is marked  $\text{♩} = 90-100$ . The key signature has one sharp (F#) and one flat (B $\flat$ ). The notation includes slurs, accents, and a 'slap t.' instruction. The piece ends with a double bar line and repeat dots.

## NR.3



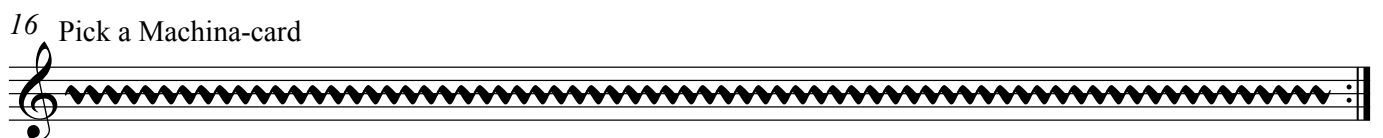
Musical notation for NR.3, starting at measure 9. The instruction is 'Pick a Machina-card'. The notation consists of a continuous, dense, wavy line across the staff, representing a complex rhythmic or melodic pattern. The piece ends with a double bar line and repeat dots.

## NR.4



Musical notation for NR.4, starting at measure 13. The tempo is marked  $\text{♩} = 100$ . The notation features triplets and slurs. The dynamic is *mp*. The piece ends with a double bar line and repeat dots.

## NR.5



Musical notation for NR.5, starting at measure 16. The instruction is 'Pick a Machina-card'. The notation consists of a continuous, dense, wavy line across the staff, representing a complex rhythmic or melodic pattern. The piece ends with a double bar line and repeat dots.

## NR.1

Christian Meaas Svendsen

Escher's loop-effect

sul tasto normal

III  
*mf*

## NR.2

5 ♩=90-100

pizz hit body w/  
left finger

## NR.3

9 etc.

II  
*mf*

## NR.4

♩ = 100

13 Pick a Machina-card

## NR.5

16 Pick a Machina-card

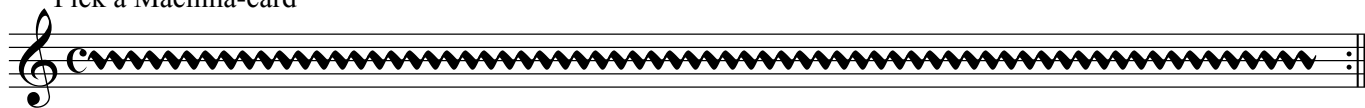
# Machina Winter Collection 2012

Voice

Christian Meaas Svendsen

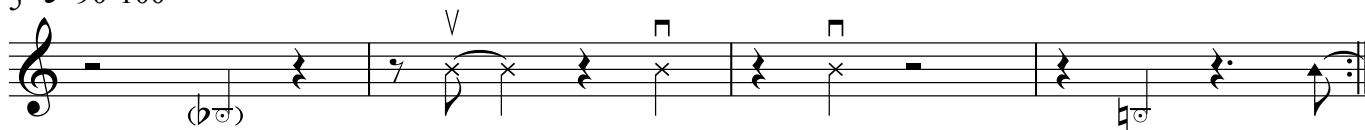
## NR.1

Pick a Machina-card



## NR.2

5 ♩=90-100



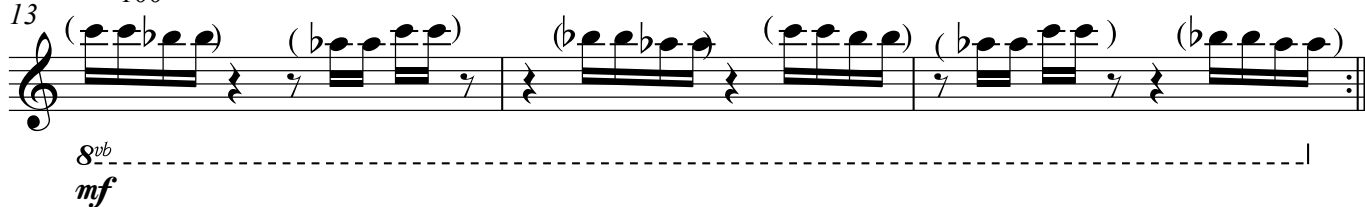
## NR.3

9 creaking sounds ad lib.



## NR.4

13 ♩=100



## NR.5

16 Pick a Machina-card

